

*AVRouter routes up to 16 XVGA and Stereo Audio Sources to 16 Remote Monitors and Speakers located at up to 100ft.*



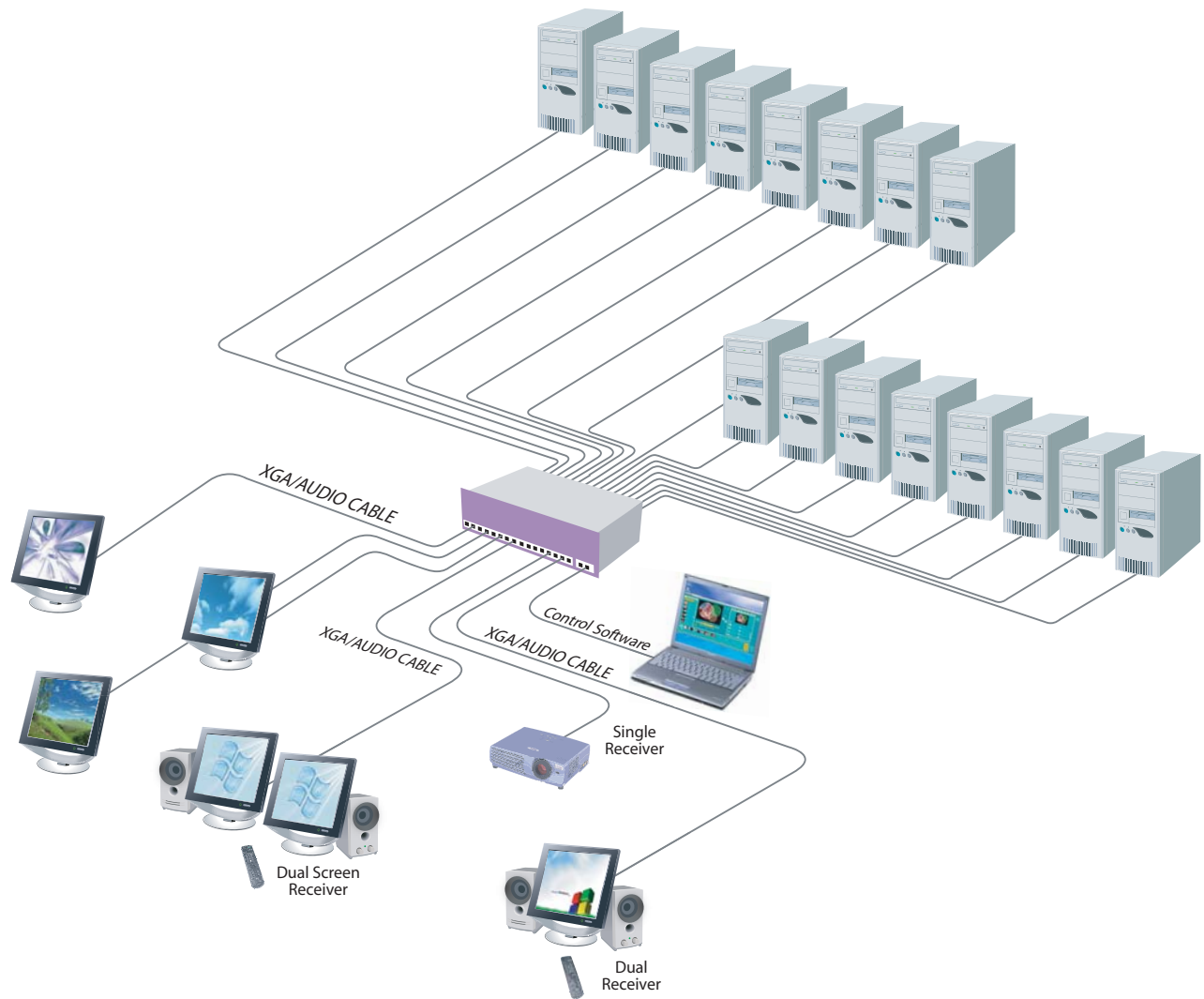
The AVRouter series of products provide an unprecedented range of switching and distribution equipment for XVGA and stereo Audio. By combining the features of High quality Video matrix, High quality Audio matrix, Interactive Infrared control and Windows control Software.

The AVRouter creates an extremely powerful and cost effective product for use in high quality Video switching, security and data distribution. Housed in standard 19" rack mounting cases, various models are available allowing multiple configurations.

## FEATURES

- ▲ RS232 Windows GUI control
- ▲ Very high quality Video switching
- ▲ Very high quality Audio switching
- ▲ High resolution up to 1600 x 1200
- ▲ Infra Red and RS422 control
- ▲ PC Windows software control
- ▲ Drive cable up to 100ft
- ▲ TCP/IP and Telnet control
- ▲ Can be mixed with other video signal (RGB, YUV, RGBS)

## Application Diagram



## Applications

- Wall Displays
- Digital media
- Airports
- Dealer rooms
- Control rooms
- Audio Visual Presentation
- Shopping centres
- Security
- Point of sale
- Hotels

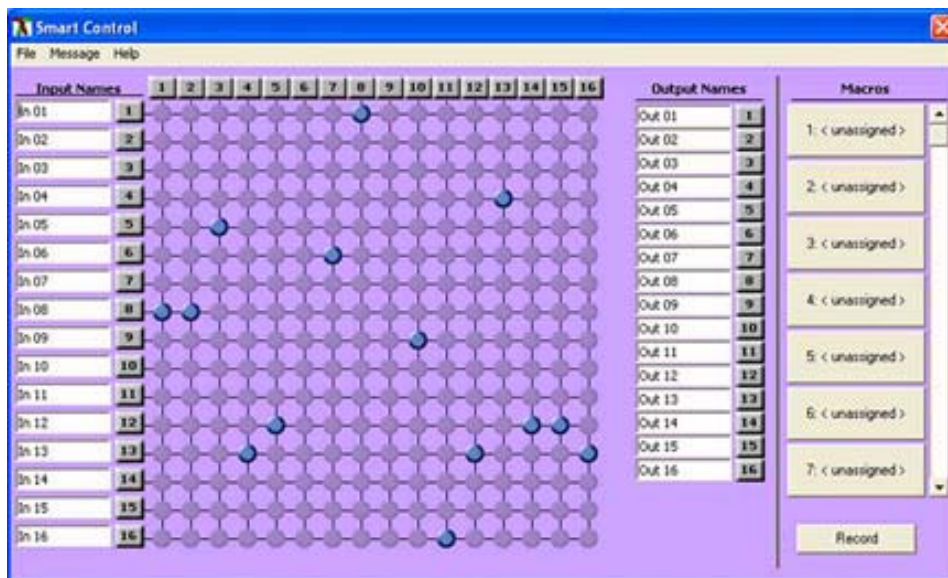
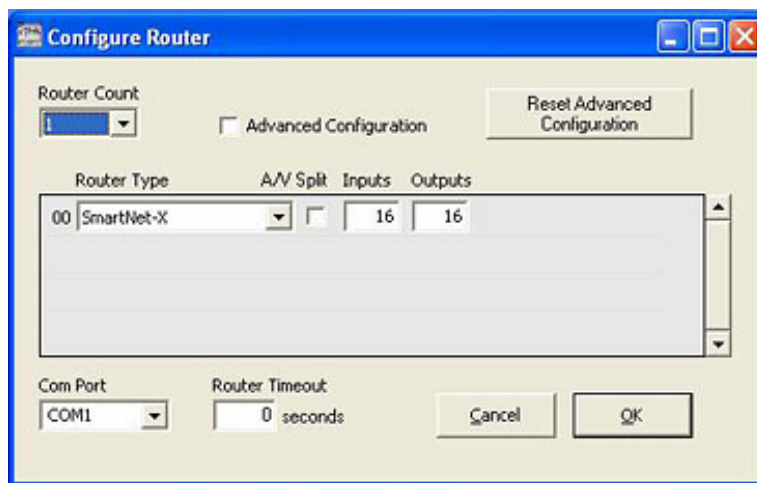
## Overview

The AVRouter is a high-quality switching matrix for video and stereo audio type signals. All signal formats are catered for including VGA, SVGA, XGA, UXGA. Standard VGA connectors (HD15 sockets) are used on the rear for ease of installation for video connectivity and standard computer audio.

The units contain a very high bandwidth routing matrix for the Red, Green and Blue video channels and separate switching layers for stereo audio. The color signals are then balanced internally and combined with the audio signals. This combined signal is then driven out through output connectors in the rear panel.

## Control

Each unit can be controlled via a RS422 port connecting via a RJ45 on the front of the main chassis. Two connectors are provided for expansion, allowing a simple Cat5 patch cable to link to additional units. An adjustable rotary switch allows each unit to be assigned a unique ID, read when the unit is first powered up. An optional Windows application (SmartNetControl) is available including a RS232 to RS422 converter.



# MATRIX SPECIFICATIONS

ITEM	DESCRIPTION
Video	
Bandwidth	400MHz
Input Signal Level	1Volt pk-pk into 75R
Output Impedance	100 Ohms
Input Impedance	75R Ohms
Connector	HD15 socket
Format	VGA/SVGA/XGA/RGBHV/RGsB/CVBS/YC/YUV/RGBS
Syncs	TTL5VDC
Bandwidth	Horizontal Sync up to 85KHz
Audio	
Signal	15KHz 0dB unbalanced 100ohms impedance
Connector	RCA or 3.5mm Stereo Jack
Power	
Voltage	90-230V IEC 1A A/S 50/60 Hz
Control	
IR	Individual Control
RS422	Dual RJ45 Sockets
Dimensions	
Height x Width x Depth	3U (5.24" x 19" x 11.25")
Weight	20 lbs
Video	
IN	HD15 Female
OUT	HD15 Female
Audio	
IN	3.5m Stereo Jack
OUT	3.5m Stereo Jack
Power	
	110V to 220VAC



## ORDER INFO

Model	Description
AV08X08	AVRouter 8 x 8
AV16X16	AVRouter 16x16
SMCTCP	Smart Contro TCP/IP

SmartAVI, Inc.  
 3111 Winona Ave, Suite 101 Burbank, CA 91504  
 Tel (818) 565-0011 • Fax (818) 565-0020  
 Email: info@smartavi.com • www.smartavi.com