

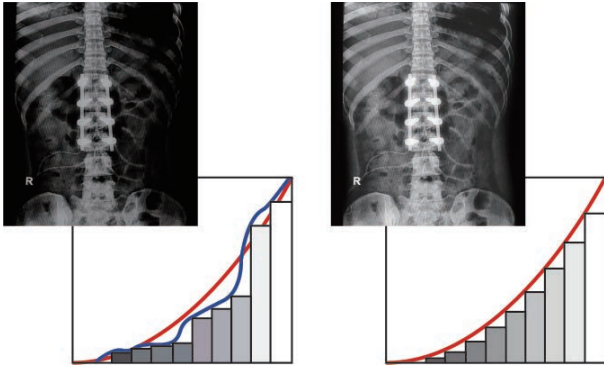
MX-Series LED-backlit Display 24" | 22"

Professional Clinical Displays of High Performance, Easy Maintenance



The MX-Series medical-grade displays are designed for durability and easy cleaning. Purpose-built for clinical review, the MX-Series features Full HD resolution, EN/IEC 60601-1 standard and DICOM Part 14 specification compliance, and provides excellent image quality, color reproduction and image contrast. The MX-Series is specifically designed for 24/7 operation in demanding medical settings.





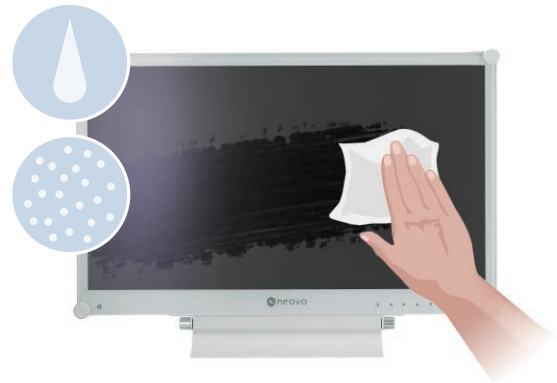
DICOM Mode

Consistent Image Clarity

The MX-Series is compliant with the DICOM Part 14 standard specifications. This calibration function corrects gamma and luminance to achieve the smooth grayscale that is required for the accurate and consistent appearance of clinical data and other review images.

Easy to Clean and Reliable Design

The anti-acid and anti-alkali coating treatment of the NeoV™ Optical Glass help the MX-Series withstand alcohol and other commonly used cleaning solutions. With the displays also bolstered by metal casing, this proprietary glass technology shields them from scratches and other damage.



Versatility and Multitasking

Multiple signal source options, including HDMI and DisplayPort 1.2, offer the versatility for the MX-Series to integrate with other instruments. Its broad connectivity enables the PIP/PBP capability that makes multitasking possible—studying different images or matching medical records—in a single display.

Medical-Grade Safety Certification

The MX-Series adopts a specially designed low-voltage medical-grade power supply to ensure safety, performance, and reliability in any professional medical environment. Compliance with the EN/IEC 60601-1 standards ensures their safe and reliable performance in demanding medical settings.



Features

- Compliance with DICOM Part 14 with calibrated greyscale and brightness
- Metal casing and NeoV™ optical glass
- EN60601-1 and IEC60601-1 medical certification
- Equipotential terminal for safety standard
- Versatile inputs: VGA, DVI, HDMI, DisplayPort, Audio in
- Support PIP/PBP, 3D Deinterlace, Noise Reduction functions
- Anti-Burn-in™ technology
- EcoSmart Sensor allows brightness adjustment by ambient light
- VESA Mounting compliance to fit different medical environments
- Selectable aspect ratio for ultimate image
- Rigorous screening of the components for mission-critical 24/7 applications
- Gamma correction and black-level alignment



Specifications

MX-24

MX-22

Panel	Panel Type	LED-Backlit TFT LCD	LED-Backlit TFT LCD
	Panel Size	23.6"	21.5"
Frequency (H/V)	Max. Resolution	FHD 1920 x 1080	FHD 1920 x 1080
	Pixel Pitch	0.2715 mm	0.2482 mm
	Brightness	300 cd/m ²	250 cd/m ²
	Contrast Ratio	1,000 : 1	1,000 : 1
	Viewing Angle (H/V)	170°/160°	170°/160°
	Disply Colour	16.7 M	16.7 M
	Response Time	5 ms	5 ms
Input	H Freq.	24 kHz – 82 kHz	24 kHz – 82 kHz
	V Freq.	50 Hz – 75 Hz	50 Hz – 75 Hz
Audio	VGA	15-Pin D-Sub	15-Pin D-Sub
	DVI	24-Pin DVI-D	24-Pin DVI-D
	HDMI	HDMI	HDMI
	DisplayPort	DisplayPort 1.2	DisplayPort 1.2
Power	Audio In	1 x stereo audio jack for PC (3.5 mm)	1 x stereo audio jack for PC (3.5 mm)
	Speaker	2 W X 2	2 W X 2
NeoV™ Optical Glass	Power Supply	External	External
	Power Requirement	DC 12 V	DC 12 V
	Consumption	< 19 W (On)	< 18 W (On)
Operating Conditions	Stand By	< 0.5 W (Stand-by/ Off)	< 0.5 W (Stand-by/ Off)
	Thickness	3.0 mm (0.12")	3.0 mm (0.12")
	Reflection Rate	< 1%	< 1%
	Transmission Rate	≥ 97%	≥ 97%
Storage Conditions	Coating Hardness	9H	9H
	Temperature	0°C ~ 40°C (32°F ~ 104°F)	0°C ~ 40°C (32°F ~ 104°F)
Mounting	Humidity	10%~90% (No condensation)	10%~90% (No condensation)
	Temperature	-20°C ~ 60°C (-4°F ~ 140°F)	-20°C ~ 60°C (-4°F ~ 140°F)
Security	Humidity	5%~95% (No condensation)	5%~95% (No condensation)
	VESA FPMPI	Yes (100 x 100 mm & 75 x 75 mm)	Yes (100 x 100 mm & 75 x 75 mm)
Dimensions	Kensington Security Socket	Yes	Yes
	w/ base (W x H x D)	562.0 x 397.0 x 155.0 mm (22.1" x 15.6" x 6.1")	513.0 x 369.0 x 155.0 mm (20.2" x 14.5" x 6.1")
Weight	Packaging (W x H x D)	676.0 x 525.0 x 213.0 mm (26.6" x 20.7" x 8.4")	602.0 x 476.0 x 212.0 mm (23.7" x 18.7" x 8.3")
	w/o base	7.8 kg (17.2 lb)	6.9 kg (15.2 lb)
Regulation Approval	Packaging	10.6 kg (23.4 lb)	9.5 kg (20.9 lb)
	Certification & Compliance	CE, EN60601-1, IEC60601-1, RoHS, WEEE, REACH	CE, EN60601-1, IEC60601-1, RoHS, WEEE, REACH
Optional Accessories	Accessories	Supplied	Supplied
	Supplied	Power Cord, Power Adaptor, 15-Pin D-sub Cable, Audio Cable, Quick Start Guide, Warranty Card	Power Cord, Power Adaptor, 15-Pin D-sub Cable, Audio Cable, Quick Start Guide, Warranty Card
Optional Accessories	Supplied	Power Cord, Power Adaptor, 15-Pin D-sub Cable, Audio Cable, Quick Start Guide, Warranty Card	Power Cord, Power Adaptor, 15-Pin D-sub Cable, Audio Cable, Quick Start Guide, Warranty Card
	Optional Accessories	Wall Mount: Wall Mounting Arm: WMA-01 Wall Mounting Kit: WMK-01, WMK-03 Ceiling Mount: CMP-01 Desk Mount: Desk Mounting Kit: DMC-01, DMC-02D Desk Mounting Stand: DMS-01D, DMS-01Q Height Adjustable Stand: ES-02 Handle: HDL-02	Wall Mount: Wall Mounting Arm: WMA-01 Wall Mounting Kit: WMK-01, WMK-03 Ceiling Mount: CMP-01 Desk Mount: Desk Mounting Kit: DMC-01, DMC-02D Desk Mounting Stand: DMS-01D, DMS-01Q Height Adjustable Stand: ES-02 Handle: HDL-02